

TechBrick Installation Guide

APPLICATIONS



For individual customers who are planning to wrap up the facade of his house clinker impose foundations, fence or to give a rustic look to the interior, flexible slabs TechBrick an excellent choice. In the era of big savings, every dollar spent on construction or renovation is important for the client. Unique and one of a kind material with such characteristics as flexibility, very easy installation, requiring no special tools -

TechBrick is the most pure product in the construction market and clinker facade. This allows you to save considerably in terms of performance, because each customer can do the work yourself or with the help of family, friends, regardless of gender, age or technical ability, using tools such as scissors and brushes.

For professional developers

Flexible clinker tiles will reduce the time for laying by more than half. Due to its small thickness of 3 mm, TechBrick eliminates the need for additional grouting needed for traditional ceramic tile. Special glue in the selected color is also a fugue, which is carried out grouting with a damp brush. The savings associated with a few days in anticipation of the possibility of additional grouting after the glue has dried, downtime on the construction, the cost of long-term use of scaffolding, the acquisition and storage of additional materials, as well as the use of expensive tools, etc., is a considerable sum. Small weight flexible tile TechBrick, about 4.0 - 4.5 kg per 1 square meter of tiles, will save on transportation and storage of the material.

For large objects

Multifamily, commercial or industrial, light weight flexible ceramic tiles saves associated with more facades and strengthening of the foundation, as well as with complex and costly systems of fastening and assembly at the construction stage. System TechBrick, clinker tiles and special glue, weighs about 6.2kg to 1kv.m. and it is one of the easiest facade systems. You may also be laid on any type of insulation, whether polystyrene or mineral wool. After priming the surface, TechBrick can also be applied directly to the concrete wall, a wall of ceramic or concrete blocks. The unique flexibility of the tile TechBrick help protect facades against cracks caused by subsidence of the walls of buildings, or even small tectonic movements.

Facing front

System TechBrick, which consists of an elastic ceramic tiles and special glue TechBrick, more than 50 years has been used successfully for high-quality facade cladding, as well as for the construction of new buildings and renovation. During all this time, a lot of houses, residential complexes, commercial buildings, shopping centers, and office and other buildings of all types around the world have been made of a flexible finishing ceramic tiles from the Netherlands, the country with the medieval tradition of the use of clinker brick in the construction of houses. TechBrick support this tradition, taking care of an elegant and natural form of the facade with multiple reducing costs. Flexible tile TechBrick cares about elegant, harmonious structure of the clinker.

Wall coverings

Take care of the unique atmosphere in your home. You can choose bright white, expressive dark red, or one of many other warm color shades of our flexible ceramic tiles. Use the unique flexible tiles TechBrick, which is a guarantee of the unique climate and originality of your interior. The interior, which is a huge move, you can create alone. Thus, the flexible tiles are also highly valued and often used in the interior.

Decorative element

Fence? Foundation? Round column or arch? It is ideal for flexible ceramic tiles TechBrick. Where the use of traditionsnogo, hard clinker facing technical difficulties, which only multiply the cost and time of installation, the system TechBrick in his element. The unique elastic properties of ceramic tiles TechBrick help solve any architectural challenge.



INSTALLATION

Tools



Installation of flexible clinker TechBrick requires no special tools and can be performed by any person who has the basic skills.

Tools required for installation of flexible ceramic tiles TechBrick:

Pencil To mark the edges of the tiles

4mm notched trowel Apply a special glue

Level For smooth installation

Scissors Cutting clinker tiles in size

Brush 12mm Smooth joints

Preparing for installation:

Base The base must be adapted to the application of the outer layers and have a sturdy construction. Soft or polished plaster must be primed. The walls are lined with old must be thoroughly cleaned.

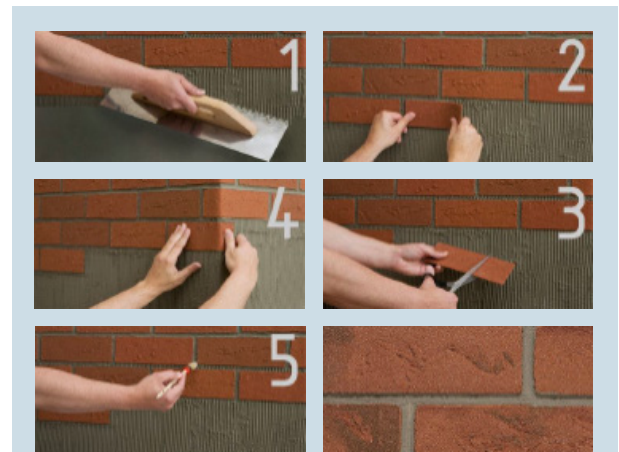
Elastic tile Tile can be laid on the substrate only by using a special glue to obtain a good adhesion and hardening. On the surface of 2 m² special glue is distributed using a notched trowel (4 mm). Glue consumption depending on the substrate of from 2.2 to 2.5 kg / m².

Clay Fugue Due to the small thickness of the flexible tile TechBrick no need for additional grouting. You only need to smooth the joints with a damp brush. It is important to note that moisture from getting under the tiles!



Note

Measure the right and left corners of the distance of 12 mm from the ceiling for the first planing and mark these points. Check tape or layer, there are two points at the same level. Connect these points and move every time down at 31cm. (50mm width tile, 12mm width = fugues 5 rows of tiles). You can string the marked points using a rope and thereby form the upper edge of the flexible tiles. Fugue horizontally and vertically should have a width of approximately 12-14 mm. When using flexible tiles must constantly use tiles from different boxes in order to provide different shades. In the case of subsequent orders the goods may be insignificant difference in color and structure tile. Prior to demonstrate how the tiles must be used to keep the surface dry for at least 7 days. Do not apply a flexible tile at a temperature below + 5 ° Celsius.



Step by step

1. With a notched trowel (teething 4 mm) apply a special glue, an area of 1 m².
2. Stick flexible ceramic tiles. The width of the joints 12-14 mm.
3. Flexible ceramic tiles can be easily cut with scissors.
4. Tile is easy to bend at the corners.
5. In order to align the seams, take a wet brush and promazhte between tiles.

TECHNICAL DATA

Flexible TechBrick clinker tiles are manufactured from high-quality raw materials. They are under constant quality control in our laboratory. Flexible tile consists of quartz sand (about 92%), which are produced specifically for the company. Mass undergoes deep coloring pigments of iron oxide and is protected from UV radiation. It ensures durability of color flexible ceramic tiles. Massa binds with high quality binder based on polyacrylate. Below is a list of certain material properties of the proposed product.

| Title | Packing | Weight | Pallet |
|--|------------------|------------|--------------------|
| A Flexible clinker tiles K 52 x 240 mm format | 1 m ² | ok. 3,5kg | 150 m ² |
| B Flexible clinker tiles NF 71 x 240 mm format | 1 m ² | ok. 4,0kg | 120 m ² |
| C Glue / Fugue 15kg | bucket | ok. 15,4kg | 48 buckets |
| D Glue / Fugue 15kg | bucket | ok. 5,2kg | 144 buckets |

Description of material

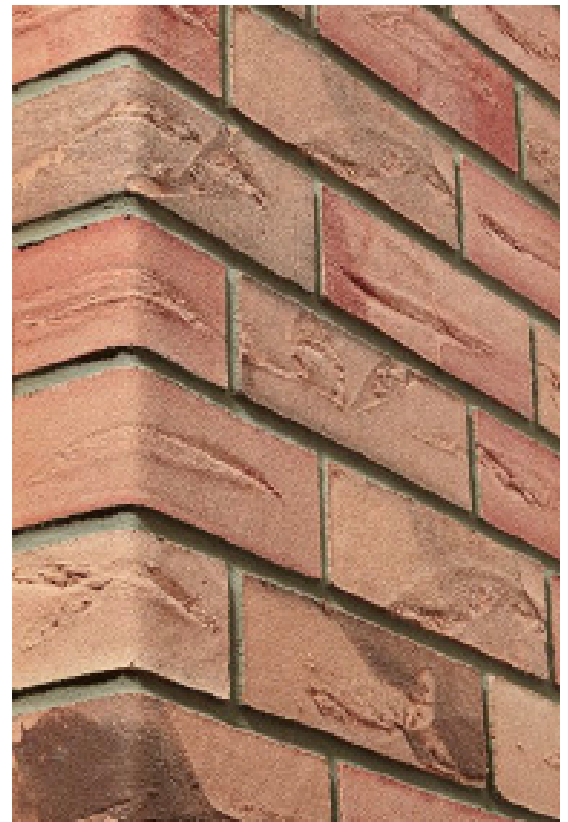
- Communication: On the basis of polyacrylic
- Shades of the color pigments based on iron oxide
- Filling: special blend of different, specially selected quartz sands.

Material properties

- The material is very flexible, so it can be applied on round
- Surfaces and can be bent and adapted to the shape of an angle
- Light weight, about 6.5 kg per m²
- Coating thickness of about 4 mm
- Flexible strips ceramic tiles can be cut to the appropriate size with scissors
- Minimum waste when cutting (as opposed to stone)
- Washable at pressures up to 30 bar
- Durable material
- Vapor-permeable, breathable material
- Absolutely frost
- Resistant to UV radiation
- No need for grouting
- No need for impregnation
- Apply only on a special adhesive TechBrick
- Flexible clinker tiles becomes hardness together with glue

Application

- Can be used on any rigid substrate
- Facades of houses
- Decorating interior walls
- Restoration of houses
- Most suitable for coating insulation systems (outdoor)



USE

Substrate

The base must be adapted to the application of the outer layers and have a sturdy construction. Soft or polished plaster must be primed. The walls are lined with old must be thoroughly cleaned. Special glue: Important: The tiles can be laid on the substrate only using a special glue to get good adhesion and hardening. On the surface of 2 m² special glue is distributed using a notched trowel (4 mm). Glue consumption depending on the substrate from 2.2 to 2.5 kg / m². Flexible clinker tiles: Before you apply adhesive, determine the placement of the tiles on the substrate. Then place the tiles in any order on the wet adhesive and press firmly. Flexible ceramic tiles can be easily into any shape. If necessary, in the case of low temperature, the tiles should be warmed before use. Fugue: Due to the small thickness of the flexible tile TechBrick no need for additional grouting. You only need to smooth the joints with a damp brush. It is important to note that moisture from getting under the tiles!

Heat resistance

Exterior features: no negative impact at a temperature of from -30 ° C to +100 ° C.

Internal Features: no negative impact at a temperature of from 0 ° C to +100 ° C.

Storage

Flexible clinker tiles TechBrick must be transported and stored in closed dry rooms without contact with water. In no case do not store the tiles outdoors. Special glue TechBrick, which is adhesive-fugue, should be stored at zero temperature. Avoid contact with the cold.

Note

- When using a flexible tile must constantly use tiles from different boxes in order to provide different hues.
- In the case of subsequent orders the goods may be insignificant difference in color and structure tile.
- Before applying the tile must be used to keep the surface dry for at least 7 days .
- Do not apply a flexible tile at a temperature below + 5 ° Celsius.

Our verbal and written recommendations for the use of the products correspond to the current level of knowledge and practical application. However, they should only be regarded as non-binding recommendations.

Packing

1m in box.

