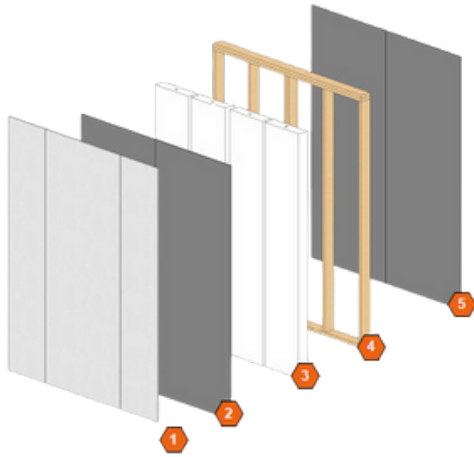
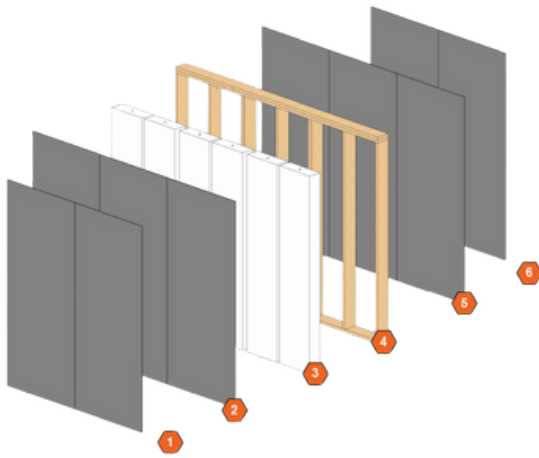


TechPanel® | Fire-Rated Assemblies



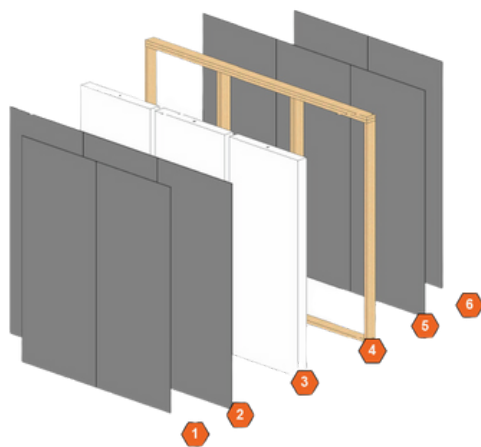
1 HR
Fire-Rated
ASTM E119
CAN/ULC S101
TechPanel® | 7 1/2"
Load-Bearing Assembly
FRL-60

- Key**
1. 5/8" (16mm) Type X Gypsum Wall Board complying with ASTM C1396 (Interior Side A)
 2. Techboard™ 1/2" (13 mm) thickness
 3. 5 1/2" EPS, Type I specifications of ASTM C578
 4. Wood Framing 24" o.c (min)
 5. Techboard™ 1/2" (13 mm) thickness



2 HR
Fire-Rated
ASTM E119
CAN/ULC S101
TechPanel® | 9 1/4"
Load-Bearing Assembly
FRL-120

- Key**
1. Techboard™ 1/2" (13 mm) thickness
 2. Techboard™ 1/2" (13 mm) thickness
 3. 7 1/4" EPS, Type I specifications of ASTM C578
 4. Wood Framing 24" o.c (min)
 5. Techboard™ 1/2" (13 mm) thickness
 6. Techboard™ 1/2" (13 mm) thickness



2 HR
Fire-Rated
ASTM E119
CAN/ULC S101
TechPanel® | 7 1/2"
Non-Load Bearing Assembly
FRL-120

- Key**
1. Techboard™ 1/2" (13 mm) thickness
 2. Techboard™ 1/2" (13 mm) thickness
 3. 5 1/2" EPS, Type I specifications of ASTM C578
 4. Wood Framing 48" o.c
 5. Techboard™ 1/2" (13 mm) thickness
 6. Techboard™ 1/2" (13 mm) thickness

ZS2 TechPanel® may be used in specific published fire-resistant-rated assemblies as tested in accordance with ASTM E119 and CAN/ULC S101. Follow published fire-resistance rated requirements and consult local building codes and designer of record for fire-resistant design requirements.

Have a project in mind? Get in touch.

ZS2's building materials are available across North America. We have regional TechPartners and construction experts ready to support and help you **cement** the details.

info@ZS2technologies.com | zs2technologies.com